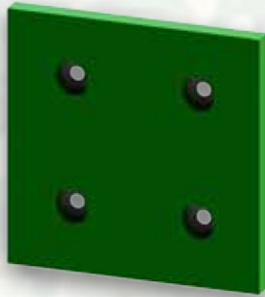


MODULAR LINING SYSTEMS

Argonics has a variety of options available to line your screen feeder and discharge lips. Simply choose a panel that best fits your application from one of the many options in our full line. Don't see one that will work for you? We can custom make one that will fit your need.

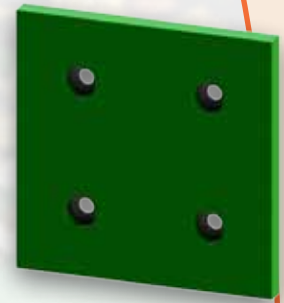
12"x12" WELDABLE PANELS

With four weldplates and Snap-Tite plugs.



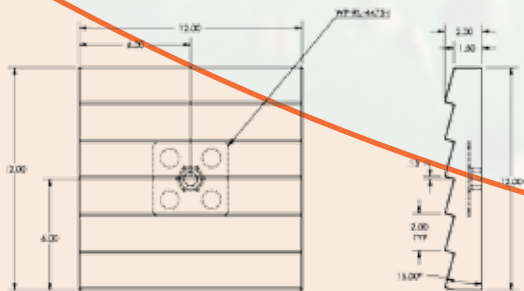
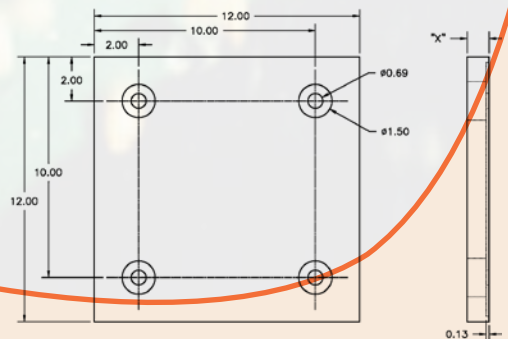
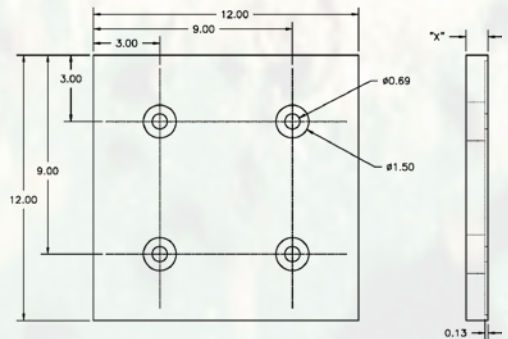
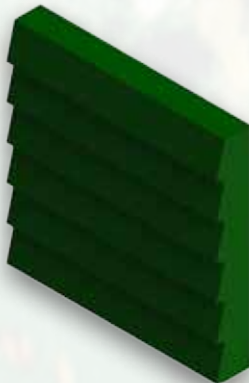
12"x12" WITH 10-GAUGE SOLID METAL BACK PANELS

Solid metal back for bolting. 6" or 8" hole spacing for consistent placement.



12"x12" WITH 15° STEPPED PANELS

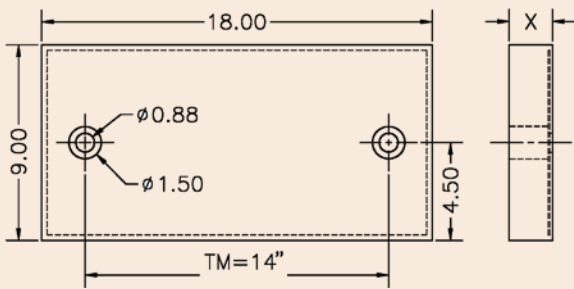
The stepped panel allows for material to build up on the steps, providing extra wear protection.



MODULAR LINING SYSTEMS

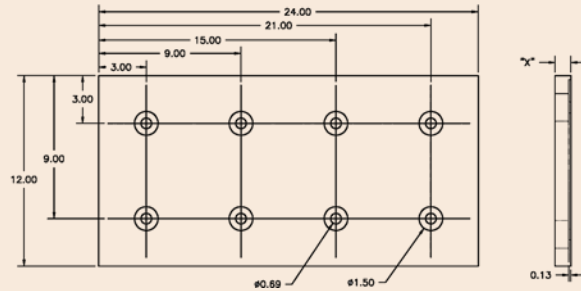
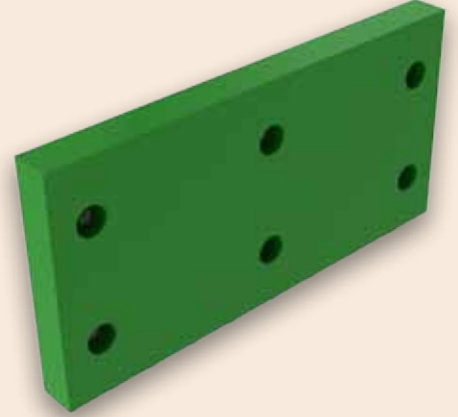
9"x18" MODULAR PANELS

Has a 14-gauge solid metal insert.



12"x24" WITH 10 GAUGE SOLID METAL BACK PANELS

Solid metal back for bolting. 6" or 10" hole spacing for consistent placement.



CUSTOM PANELS

Available in any size, with the following options: solid metal insert, weldplates, studs, or our exclusive Blind Threaded Nut Insert (BTNI).

